

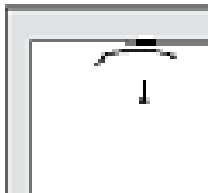
HARDWARE INSTALLATION

Tracking system may be installed on ceiling or wall. Brackets are provided. We recommend the use of one bracket for every meter (39") of the tracking system. First and last brackets should be installed not more than 6 cm (2 1/4") from each end of the tracking system. We strongly recommend use of wall or ceiling plugs on all non-wood installations. (I.e. plaster, drywall etc.)



Wall Installation

Tracking system should be positioned to allow sufficient clearance at the bottom of the vanes. (We recommend at least 1/2") Determine positions of middle support bracket, which should be evenly spaced at intervals of not more than 1 metre (39"). Hold tracking system in perfect alignment with plugs or holes for first and last brackets and use it as a guide to mark location of wall plugs and/or screws. Install appropriate wall plugs and attach all brackets using one screw in each hole of each bracket. Secure brackets by using extra screws in holes provided.



Ceiling Installation

Bracket mounts with single centre screws. All screw holes must be accurately aligned and at least 9 cm (3 1/2") from wall to allow free movement of vanes. (For positioning and number of brackets required, - see 'Hardware Installation').

Install brackets as illustrated. (See diagram)



Track Installation

The track is reversible so that the controls may be operated from either side. Tracking system simply snaps into brackets. Insert the face edge of the tracking system into the lip at the front of the bracket then push other edge into position until it snaps securely into place. Your tracking system is equipped with two controls. The chain provides control of rotation or direction of vanes. The cord allows you to traverse vanes along the tracking.

Thank you for shopping at Covers.

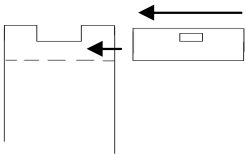
For further information, please access our website at www.coverscanada.ca or contact our office.

Covers Canada Inc.
1695 Wonderland Rd. N.
London, Ontario N6G 4W3
(519)471-7818

VANE SET INSTALLATION

All Covers vanes are 9cm (3 1/2") wide and are packaged in sets that correspond directly to our tracking system widths.

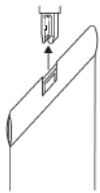
To install vanes, rotate the vane hangers on the tracking system using the chain control; so that the vane will be at 90-degree angle to the tracking system when attached.



Just before inserting vanes into hangers, ensure all vanes are facing the same direction.

For example, fabric vanes have a seam on one side. Check before hanging. Carefully slide vanes into hangers and over hooks using channel provided. (See diagram)

When removing vanes, simply reverse the process.



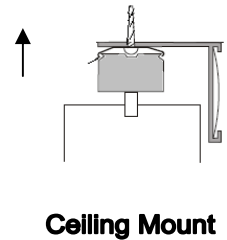
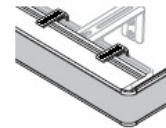
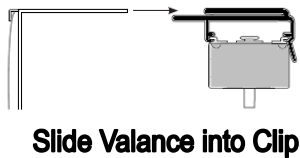
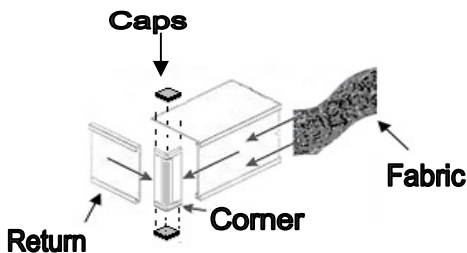
Care of Vanes

Fabric vane sets are not washable. Vacuum only. Vinyl vanes can be wiped with a cloth using soapy water with a mild detergent.

Aligning Vanes

The deluxe track has a built in self-leveling feature to re-align vanes at any time. Just pull on the chain while the blinds are in a closed position. You will hear a clicking noise. This will indicate that the vanes are being aligned.

VALANCE INSTALLATION



Wall Mount Valance

- Slide corner into valance
- Slide return into corner
- Attach clear corners, and cut off
- excess fabric at ends Slide roof of valance into slot of bracket

Ceiling Mount Valance

- Predrill valance roof 1/2" in from edge
- Position hook of bracket in line with predrilled hole and screw into ceiling.
- Snap track into valance

NOTE: Always turn vertical to open position before traversing.
The vertical blinds should be installed at least 15cm (6") above and 5cm (2") in front of any heat source.

Thank you for shopping at Covers.

For further information, please access our website at www.coverscanada.ca or contact our office.

Covers Canada Inc.
1695 Wonderland Rd. N.
London, Ontario N6G 4W3
(519)471-7818